



MEGA HOPEX INTEGRATION



PRAGMADEV
modeling and testing tools

Contents

1 Usage	3
2 Requirements	7
3 Installation	10

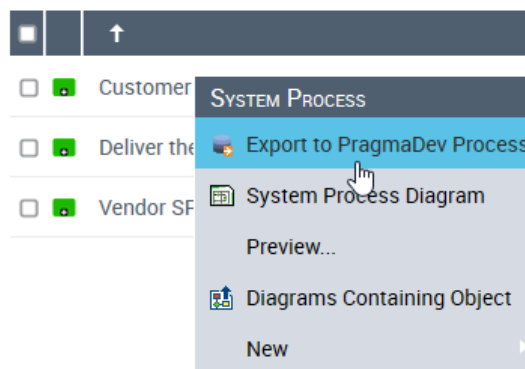
1 Usage

This integration allows Mega Hopex users to verify their models with PragmaDev Process. A building block in Hopex can be verified with PragmaDev Process if it has at least one describing diagram, and its type is one of the following:

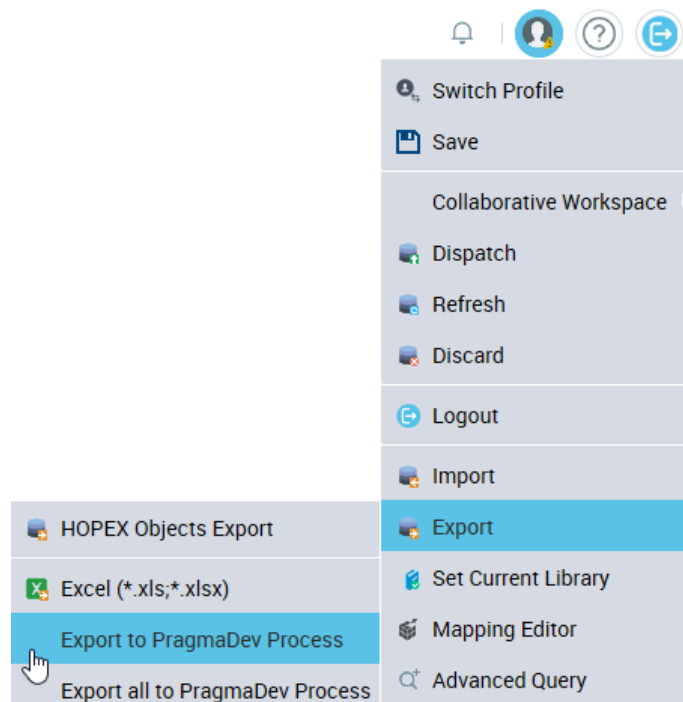
- Business Process
- Organisational Process
- System Process
- Value Stream

Every method described below will trigger the generation of a PragmaDev Process file. The file can be saved or opened directly with PragmaDev Process.

1. In Hopex web front-end, to verify a single building block right-click the object and choose *Export to PragmaDev Process* in the menu:



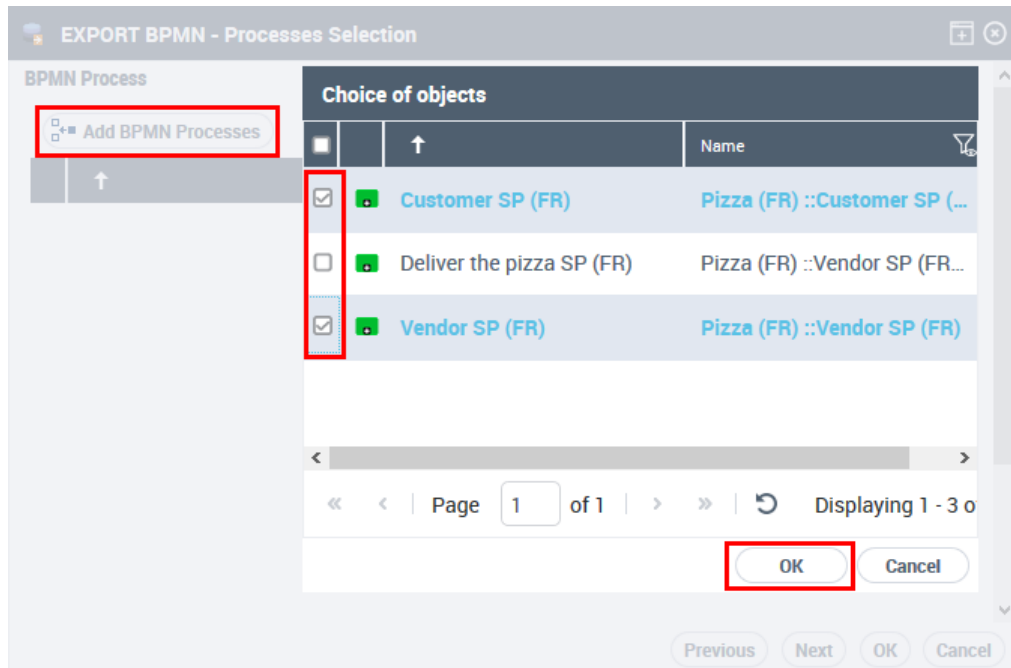
2. To verify multiple building blocks click the *Main menu* in Hopex web front-end, then *Export / Export to PragmaDev Process*:



- Choose the type of building blocks to export (either one of supported types or all of them) and click *Next*:

A screenshot of the 'EXPORT BPMN - Process type to export' dialog box. The dialog box contains a description: 'This tool allows to export BPMN processes to PragmaDev Process. BPMN 2.0 notation is used to describe the processes.' Below this, there is a section titled 'Process Type to export *' with five radio button options: 'All Process', 'Business Process', 'Organizational Process', 'System Process' (which is selected), and 'Value Stream'. At the bottom right of the dialog box, there are four buttons: 'Previous', 'Next' (which is highlighted with a red box), 'OK', and 'Cancel'.

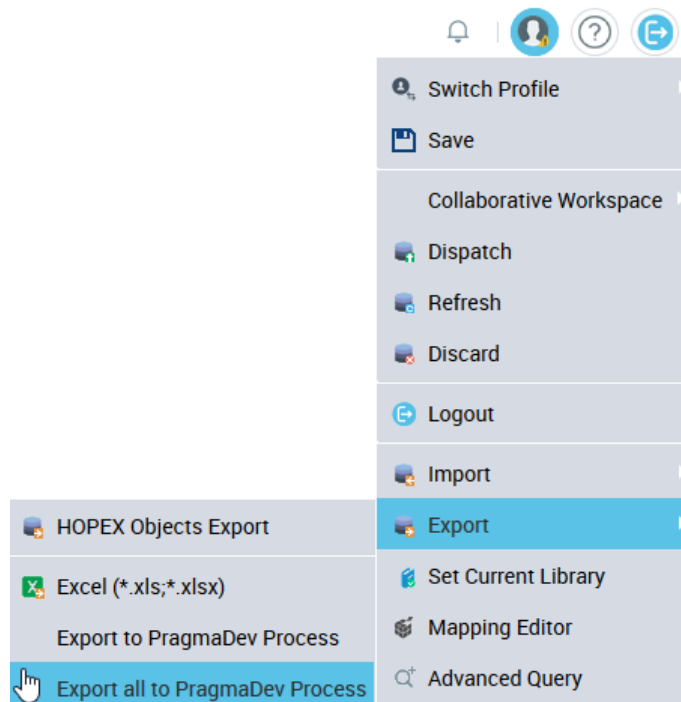
- Click on *Add BPMN Processes* and select objects to export:



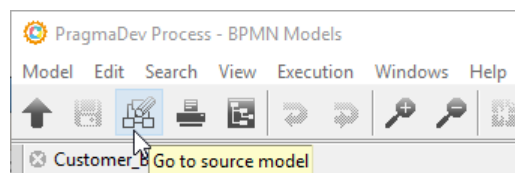
- With the selected objects added to the list, click *Next* to export them:



3. To verify all supported building blocks click the *Main menu* in Hopex web front-end, then *Export / Export all to PragmaDev Process*:



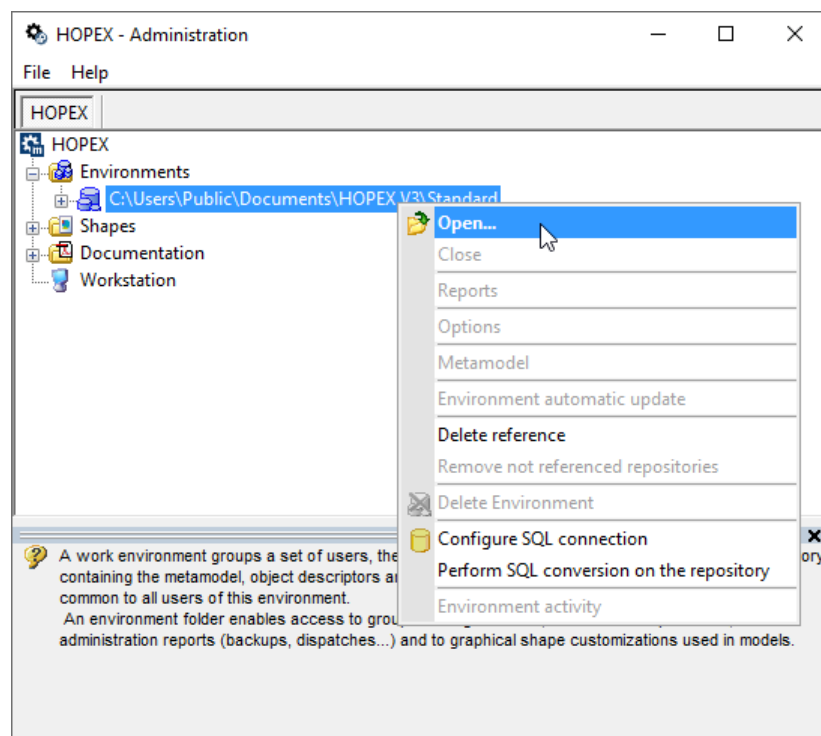
It is possible to navigate to the diagram of the building block in Hopex from PragmaDev Process via the button:



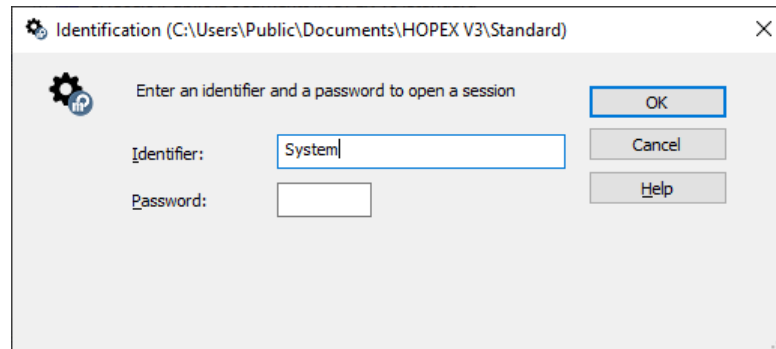
2 Requirements

Before installing make sure the following requirements are met:

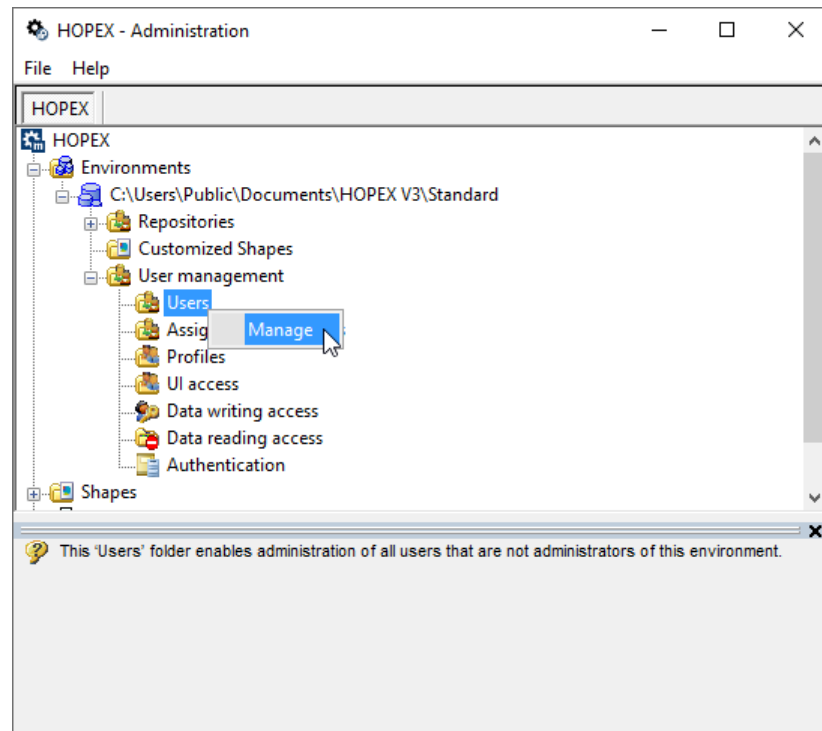
- Mega Hopex V3 or Mega Hopex V4 must be installed.
- The application server where Hopex is installed should be accessible.
- The installation folder and administration tool must be accessible (%HOPEX_INSTALLATION%\administration.exe).
- An environment must be accessible via the administration tool.
- The database attached to the environment must be accessible via the administration tool.
- The user "Administrator" must be configured as follows:
 - Launch the administration tool, right-click the environment, and *Open...*:



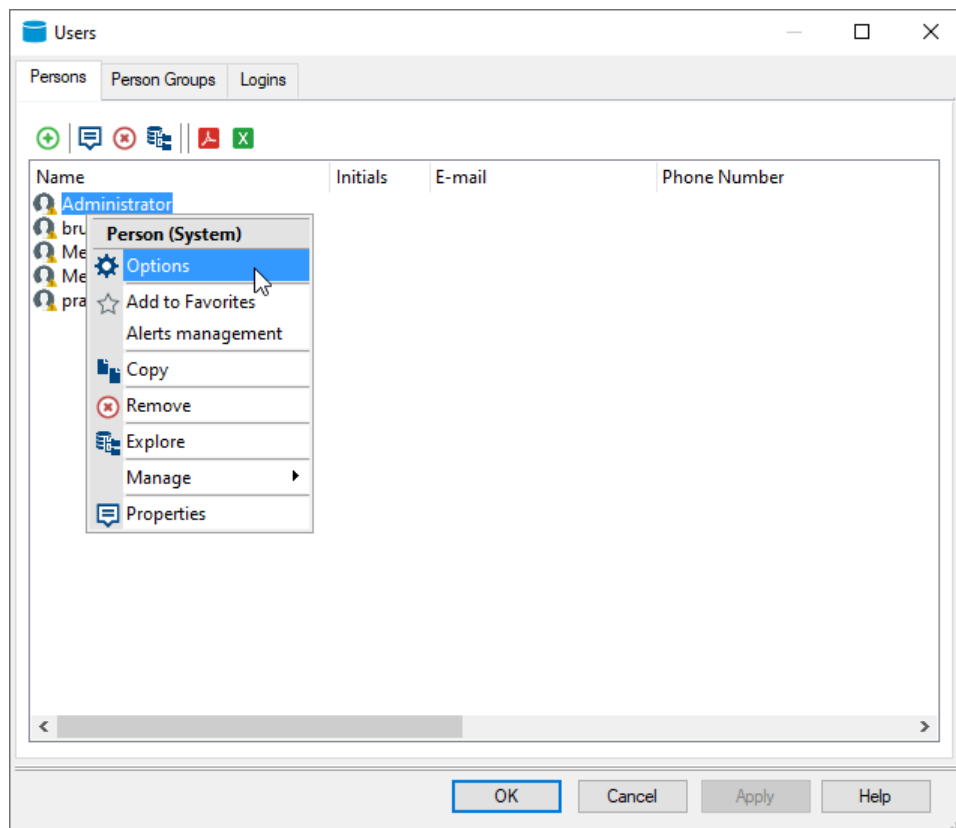
- Fill in the *Identifier* (default is System) and *Password* (by default empty):



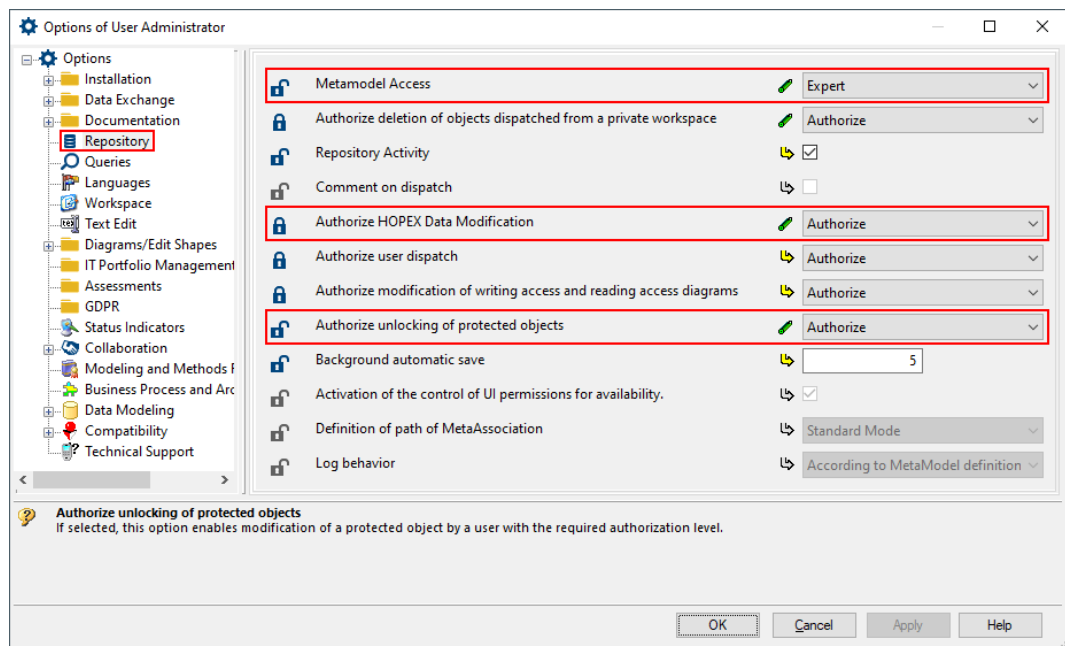
- Expand environment contents and then *User management*. Right-click *Users* and then *Manage*:



- Right-click the user "Administrator" and go to *Options*:



- Choose *Repository* in the left browser and make sure the values are configured as shown:



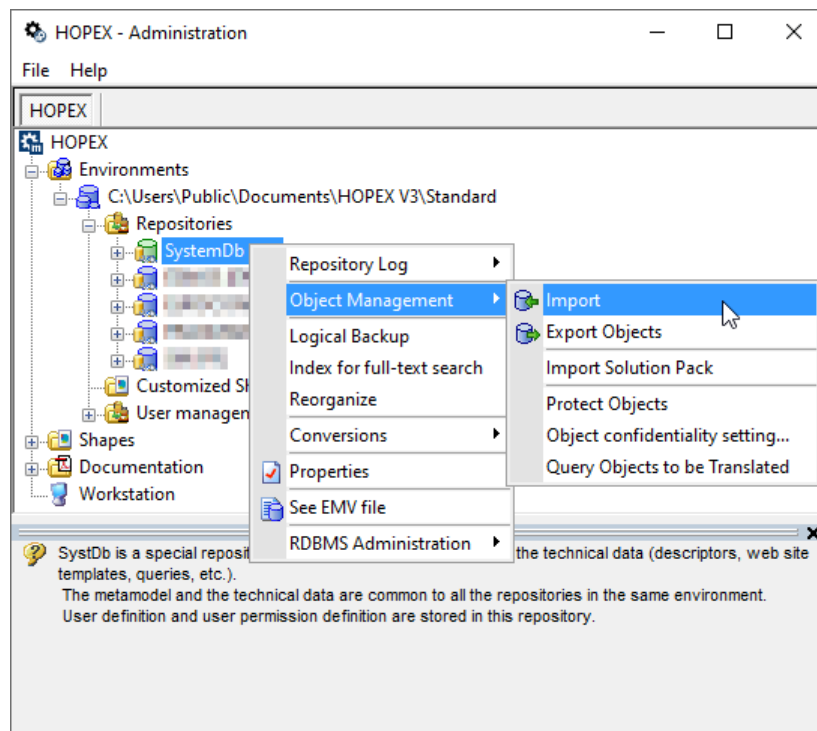
- Apply changes and close everything.

3 Installation

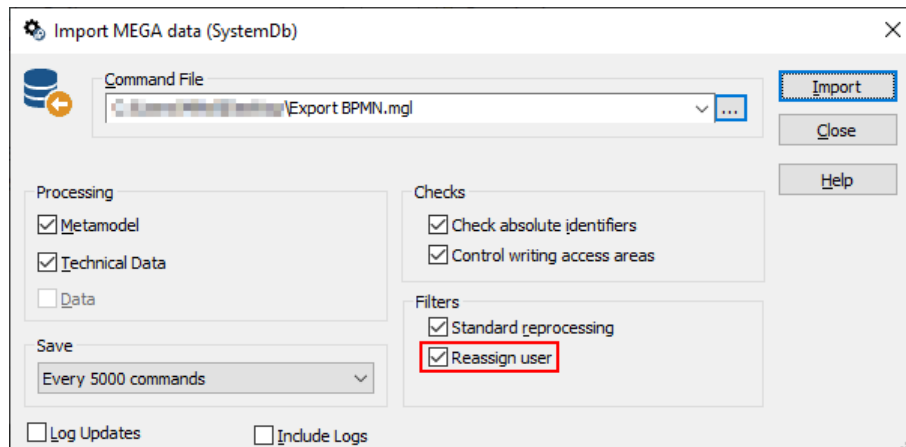
In the application server where Hopex is installed extract the contents of PragmaDev_Hopex_Integration.zip in a folder. The following files should be available:

- Export BPMN.mgl
- EXPORT-BPMN.jar
- mime.ini

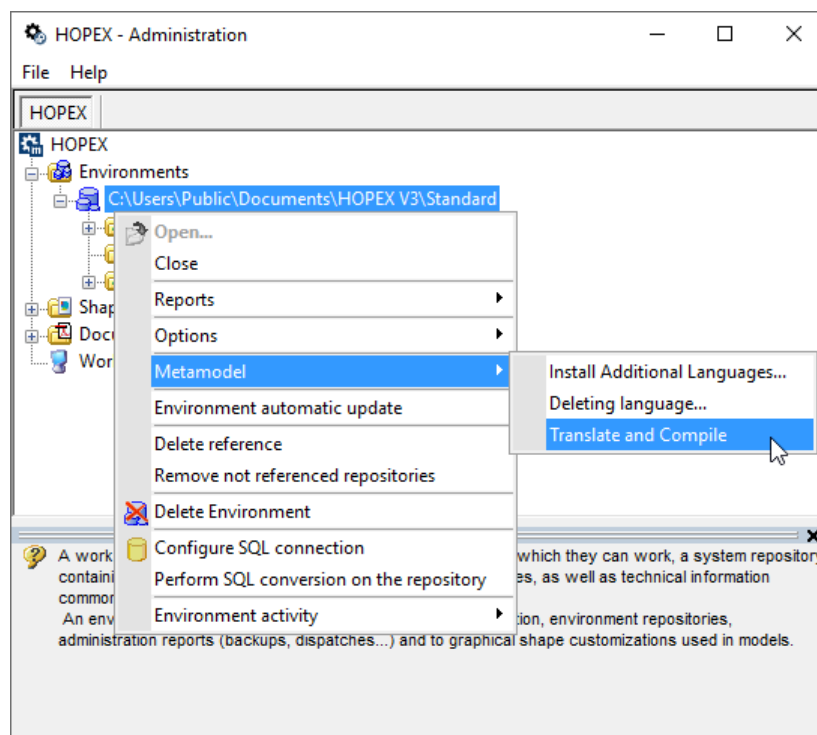
Launch the administration tool, expand the environment (enter identifier and password if asked), and then expand *Repositories*. Right-click *SystemDb*, go to *Object Management*, and click *Import*:



Select Export BPMN.mgl in the *Command File* and enable the *Reassign user* option:



Click *Import* and wait for completion. Close the import window when done. In the administration tool right click the environment, go to *Metamodel*, and click *Translate and Compile*:



When the operation is completed close everything including the administration tool. Place the EXPORT-BPMN.jar file in:

- Hopex V3: %HOPEX_INSTALLATION%\java\lib_usr
- Hopex V4: %HOPEX_INSTALLATION%\Customizations\javali

In %HOPEX_INSTALLATION%\Mega_Std find the file mime.ini and add the line:

bprz=application/bprz

You can also replace the existing file with the one included in the integration package.